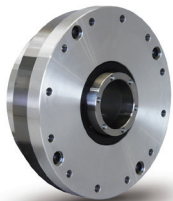




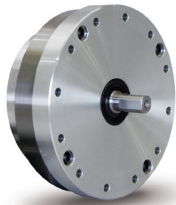
Flexwave
WPS



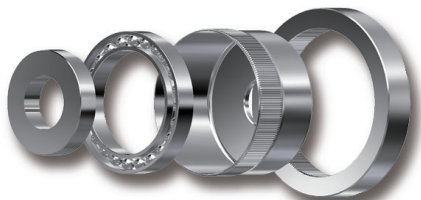
Flexwave
WPU



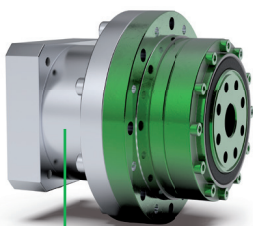
Flexwave
WPU-SRH



Flexwave
WPU-SRJ



Flexwave WPC



Gearhead

FLEXWAVE – Precision that moves

Compact design. Powerful performance. Endless possibilities.

With **Flexwave**, NIDEC Graessner presents a high-precision strain wave gear unit for demanding applications in robotics, automation and machine tool manufacturing.

Our gear unit concept combines **zero backlash** operation, high gear ratios and exceptionally high torque density in a particularly compact form.

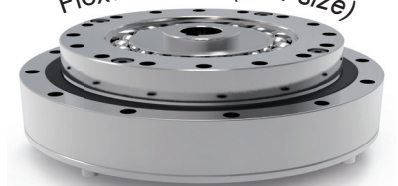
The **standard versions** of **Flexwave** are available as open or closed units, as well as mounted on a **Gearhead**. You can also purchase **Flexwave** as a high-performance **High-Torque** variant for extreme requirements!

Flexwave offers the right solution for every application.

Flexwave-Standard auf einen Blick

- 6 sizes
- Max. torque: 841 Nm
- Max. tilting moment: 849 Nm
- Lost Motion: zero backlash
- Ratio: 50:1 – 160:1

Flexwave 100 (new size)



June 2026 | Nr.63

- Here you can find additional up-to-date information:
<https://www.nidec.at/en/products/robot-gear/flexwave-the-high-precision-gearbox/>



Nidec