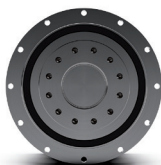



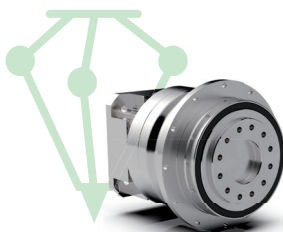
 VRT GearSystem



 PlanetGear VRT Standard Version



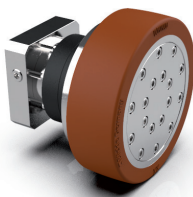
 VRT High-Precision Gearbox




 Nidec DeltaGear



 VRT Foodgrade



 Nidec GuidedGear

## Variety for the highest demands

### One gearbox, endless possibilities






Count on the **PlanetGear VRT** from **NIDEC** to handle any challenge with the highest precision and reliability!

Our **high-precision gearbox** is your reliable partner for demanding tasks that require precision to within a hundredth of a millimetre. Alternatively the **Nidec GuidedGear** is ideal for autonomous transport vehicles.


For demanding applications in the food industry, the VRS is available in a **food-grade version**. With the **Nidec DeltaGear**, delta robots can handle high-speed pick-and-place tasks with precision.

Or you can choose a ready-made **GearSystem** for dynamic machine tools and state-of-the-art robotics and automation applications.

### The VRT planetary gearbox at a glance

-  8 Sizes
-  T2B up to 7,500 Nm
-  Max. radial load up to 86,000 N
-  Torsional backlash <1 or <3 arcmin
-  Ratio 4:1 – 100:1

April 2026 | No.62

 Here you can find additional up-to-date information:  
<https://www.nidec.at/en/products/planetary-gear>



***Nidec***